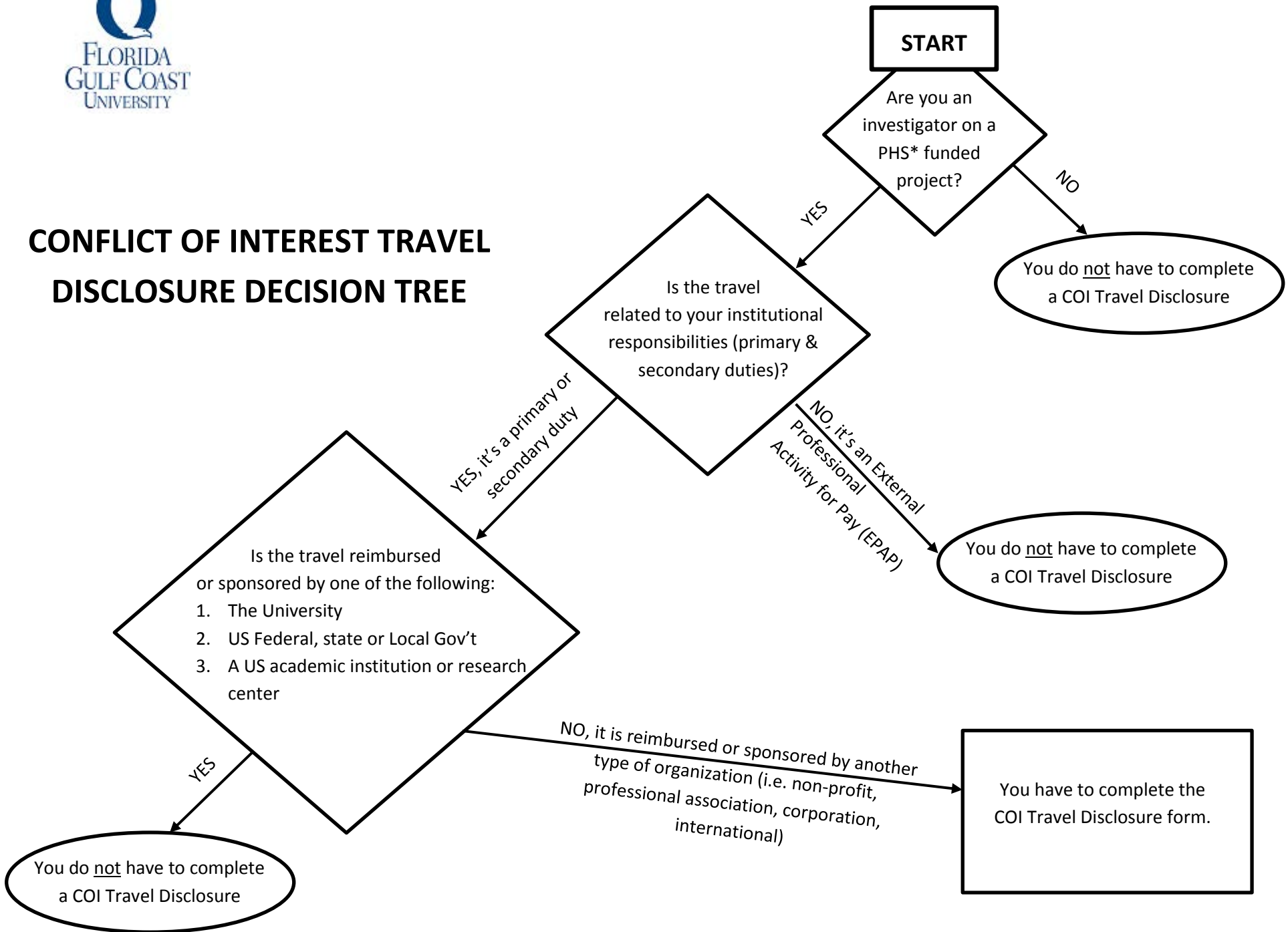


CONFLICT OF INTEREST TRAVEL DISCLOSURE DECISION TREE



*Public Health Service (PHS) means the section of the U.S. Department of Health and Human Services, and any components of the PHS to which the authority of the PHS may be delegated. The components of the PHS include, but are not limited to, the Agency for Healthcare Research and Quality, Centers for Disease Control and Prevention, Food and Drug Administration, Health Resources and Services Administration, and the National Institutes of Health.